

Activation of Contemporary Public Spaces

Group 18: Gabriela Wojtaszek, Natalia Vega, Dubravka Zidic and Diego Vives

STRENGTHS



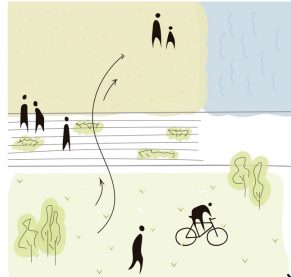
Located in a privileged place next to the port and Las Arenas beach
Well communicated to the city with different possibilities of transports
Wide variety of restaurants and social activities

WEAKNESSES

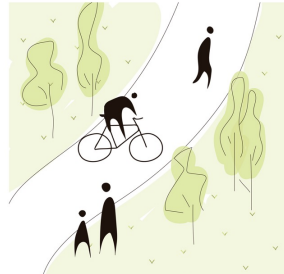


Lack of urban order in terms of the union and communication between spaces
The Marina Beach Club blocks the views from the promenade

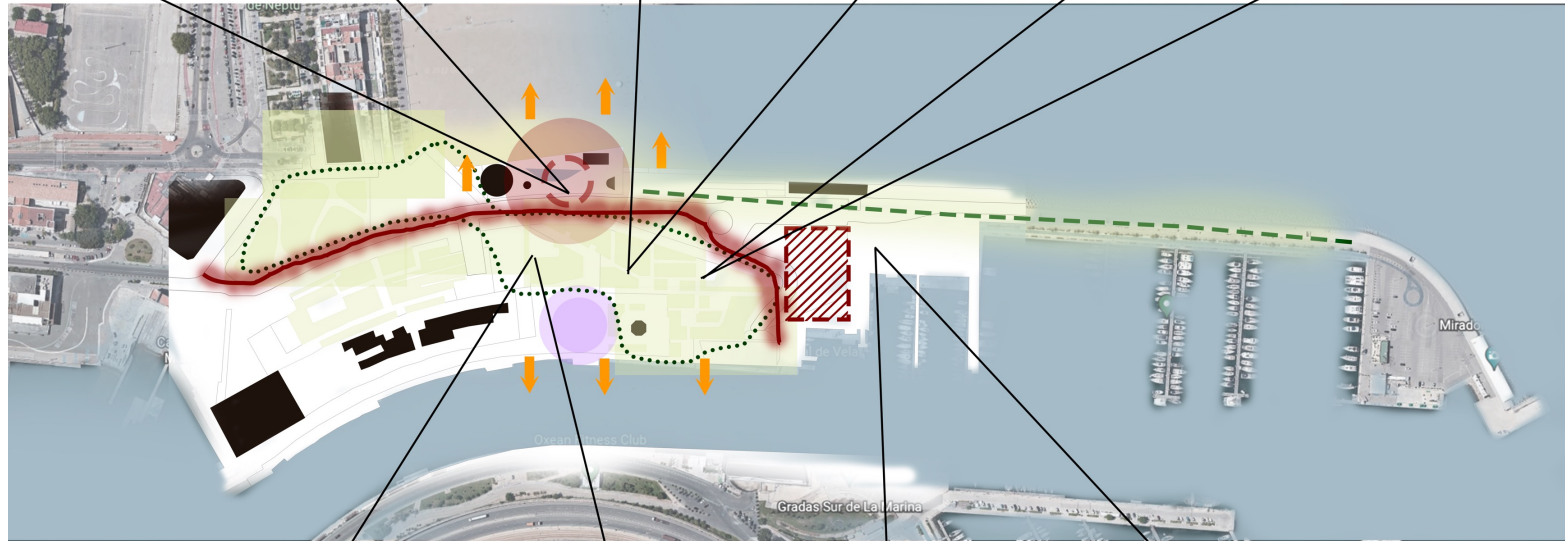
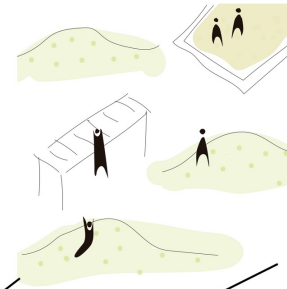
VISUAL CONNECTION



BICYCLE LINES



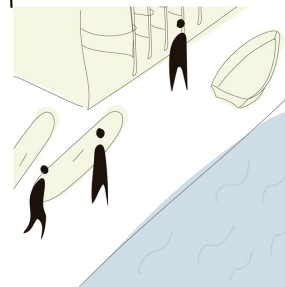
KIDS PARK

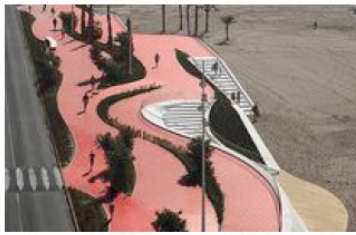


SPORTS



WATER SPORTS

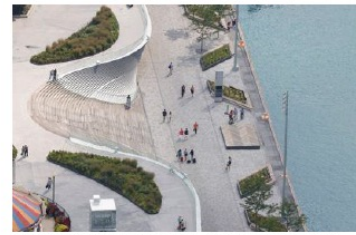




CONNECTING BEACH TO THE MARINA



NEW SPORTS AREA



CONNECTING BEACH TO THE MARINA



ADDING GREENERY TO WALKING PATHS



MASTERPLAN



ACTIVATING THE ROOF



CONNECTING TO THE SEA



NEW PLAYGROUND AREA



CONNECTING TO THE SEA



RECREATIONAL SPACE



CULTURAL ZONE



PROMENADE AREA



PARKING LOT